

Hooded Baby Bath Towel Project by Mary Jane Allen
tbearwoman@perfectlittlestitches.com
© Perfect Little Stitches, January, 2007



Supplies:

- Lightweight terry bath towel
- Puppet Face Designs — Perfect Little Stitches
- Water-soluble stabilizer
- Tulle (very fine netting) to match towel color
- Assorted embroidery threads
- Sewing thread to match towel



Print this entire document. Select "no scaling" in print menu.

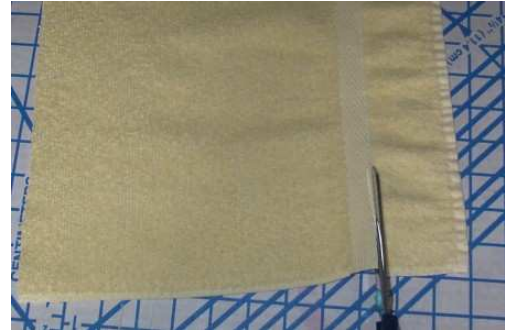


Measure the width across the middle of the towel. Add 1/2" to that measurement to determine new length for the towel. Measure from the bottom of the towel (width plus 1/2") and cut across. You now have a larger, almost square towel and a smaller, rectangular piece. Overedge stitch the cut edge of the



larger square piece (the "towel"). Fold over 1/2" and topstitch hem the cut edge.

Cut along the woven edge of the smaller, rectangular piece, as shown. Fold woven edge in half and topstitch with a narrow zigzag stitch to hem.



Print hood pattern. Cut out pattern, using the top and left edges of the paper as the two straight sides of the pattern.

Cut hood piece from the smaller rectangular piece, with the straight edges of the pattern along the selvage and hemmed sides of the towel, as shown.



Clean finish the cut edge of the hood using an overedge stitch.

Use the patterns to cut two ears from leftover terry. Clean finish all edges of each ear with an overedge stitch.

Fold the hood in half from corner to curve and mark the fold with a straight pin running along the fold, about 2" from the curved edge. Unfold. Measure 2-1/2" from the curved edge and place another straight pin, crossing with the first one. This will mark where the center of the embroidery design will be.





Hoop water-soluble stabilizer (two layers of light-weight or one layer of heavyweight). Pin the hood to the stabilizer, centering the crossed pins in the middle of the hoop, with the corner at the top of the hoop.

Cover with a layer of tulle. Move the crossed pins on top of the tulle (re-pin), then pin all around through all layers, making sure the pins are outside of where the design will embroider.



Embroider the face, using cotton bobbin thread to avoid irritating the baby's delicate skin.. Unpin. Gently pull away as much of the water-soluble stabilizer as you can. On the front, gently tear away as much of the tulle as you can. Any remaining tulle will disappear into the terry.



Place the hood wrong-side up. Pin each ear on the center of a straight side, with a 3/8" overlap. Baste the ears to the hood.

Pin the hood right-side up to a corner of the towel (the larger square piece). Choose a corner that will place the selvage edge of the towel under the hemmed edge of the hood, and the hemmed edge of the towel under the selvage edge of the hood (so that neither side will be too bulky to stitch).



Use a narrow zigzag stitch and stitch the sides of the hood to the towel.

Launder before using or giving as a gift to remove any remaining water-soluble stabilizer.

You're done!

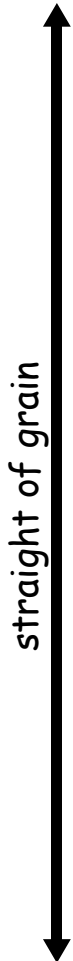
Hooded Baby Bath Towel

Hood Piece - cut one

© Mary Jane Allen

Perfect Little Stitches

<http://perfectlittlestitches.com>



These instructions are copyrighted and may not be reproduced without the author's permission (you are welcome to use them without seeking permission)..

Mary Jane Allen — tbearwoman@perfectlittlestitches.com

Perfect Little Stitches — <http://www.perfectlittlestitches.com>

